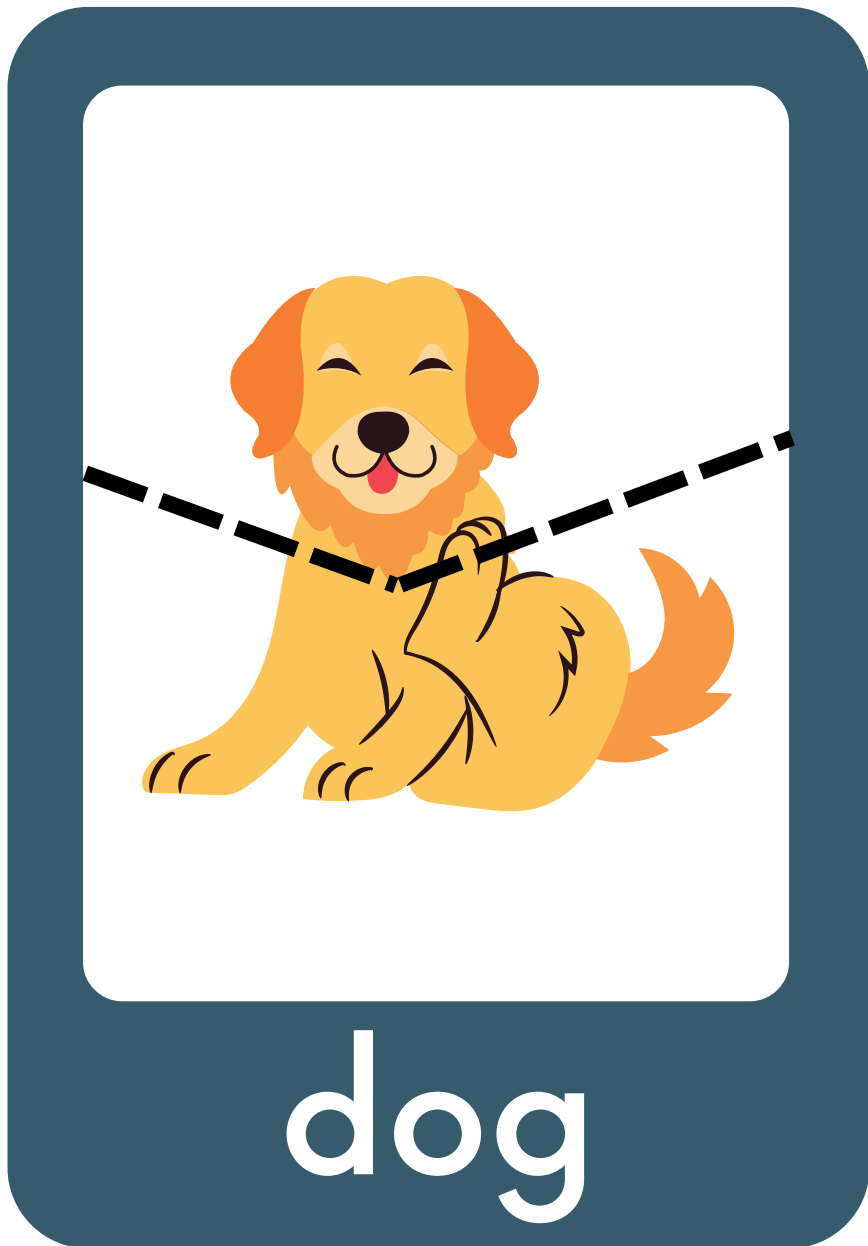


Phonological Awareness with Onset and Rime

Ask learners to put together onsets and rimes by matching picture puzzle pieces.
The onset is the part of a single-syllable word before the vowel.
The rime is the word family that follows.

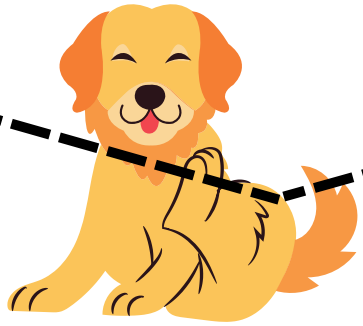
word	onset	rime
dog	/d/	/og/
cat	/c/	/at/
tin	/t/	/in/



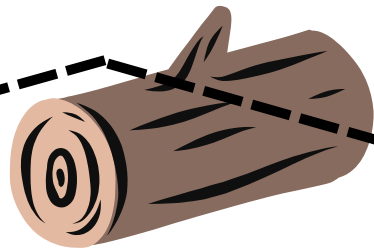
Directions.

- Ask your learner to name each picture. Use words when needed.
- Cut apart and scramble the pieces face up on a flat surface.
- While matching the puzzle pieces, ask learners to say the onset /d/ and the rime /og/, and then the whole word 'dog'.

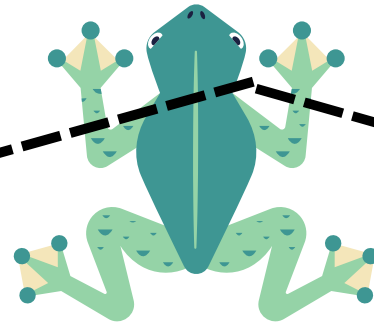




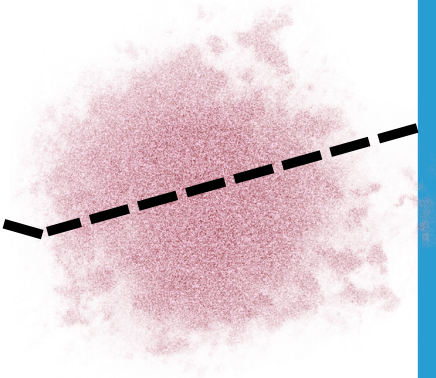
dog



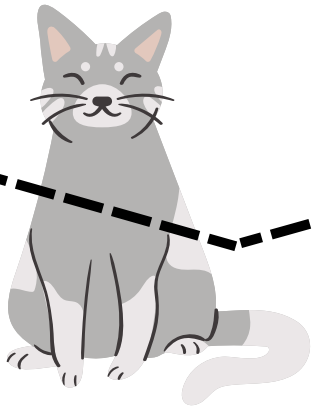
log



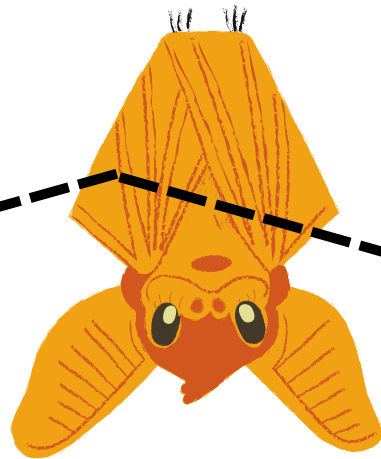
frog



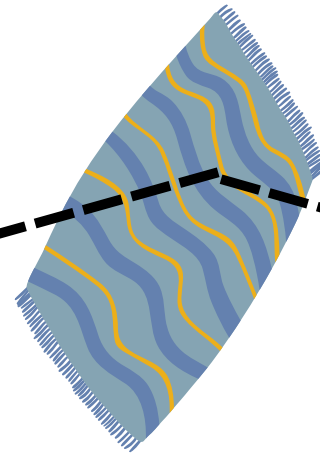
fog



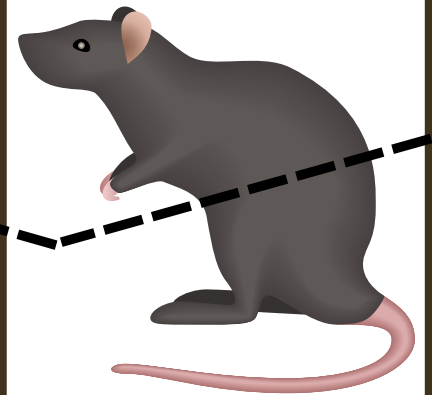
cat



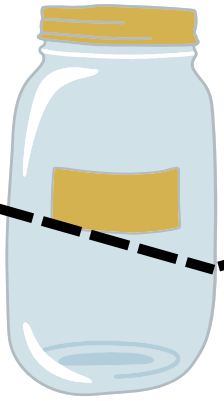
bat



mat



rat



jar



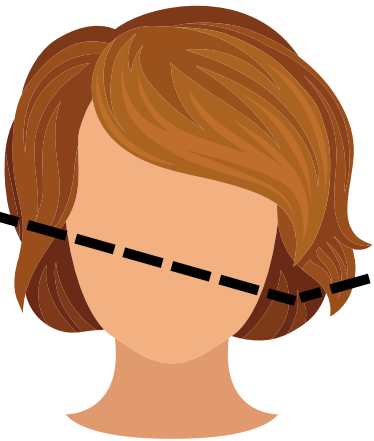
car



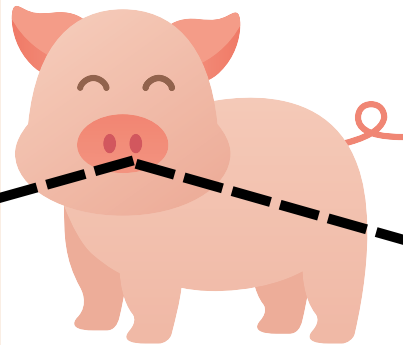
star



far



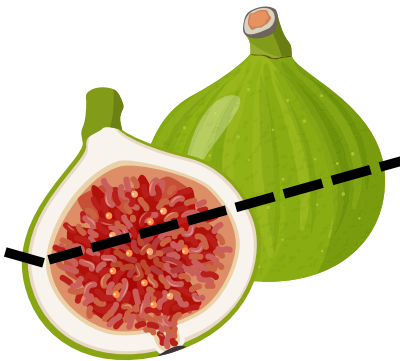
wig



pig



dig



fig